

U.S. DEPARTMENT OF AGRICULTURE
FOREST SERVICE
New Mexico
Jul. 1, 2016
America's Great Outdoors
Gila National Forest
Use Map
Motor Vehicle
VICINITY MAP
INFORMATION SOURCES
Gila National Forest Supervisor's Office
3000 E. Camino del Bosque
Silver City, NM 88061
Phone 575-388-8201
http://www.fs.usda.gov/gila/

PURPOSE AND CONTENTS OF THIS MAP

The designations shown on this motor vehicle use map (MVUM) were made by the responsible official pursuant to 36 CFR 212.51; are effective as of the date on the map cover of this MVUM; and will remain in effect until superseded by next year's MVUM.

Adam Henderson
Forest Supervisor, Gila National Forest

It is the responsibility of the user to acquire the current MVUM. This MVUM shows the National Forest System roads, National Forest System trails, and the areas on National Forest System lands in the Gila National Forest that are designated for motor vehicle use pursuant to 36 CFR 212.51. This MVUM also identifies the vehicle classes allowed on each route and in each area, and any seasonal restrictions that apply on those routes and in those areas.

Designation of a road, trail, or area for motor vehicle use by a particular class of vehicle under 36 CFR 212.51 should not be interpreted as encouraging or inviting use or implying that the road, trail, or area is passable, actively maintained, or safe for travel. Motor vehicle designations include parking along designated routes and at facilities associated with designated routes when it is safe to do so and when not causing damage to National Forest System resources. Seasonal weather conditions and natural events may render designated roads and trails impassable for extended periods. Designated areas may contain dangerous or impassable terrain. Many designated roads and trails may be passable only by high-clearance vehicles or four-wheel-drive vehicles. Maintenance of designated roads and trails will depend on available resources, and many may receive little maintenance.

This motor vehicle use map identifies those roads, trails, and areas designated for the motor vehicle use under 36 CFR 212.51 for the purpose of enforcing the prohibition at 36 CFR 261.13. This is a limited purpose. The other public roads are shown for information and navigation purposes only and are not subject to designation under the Forest Service travel management regulation.

These designations apply only to National Forest System roads, National Forest System trails, and areas on National Forest System lands.

Legend

- Roads Open to Highway Legal Vehicles
- Trails Open to Vehicles 50" or Less in Width
- Seasonal Designation (See Table)
- Dispersed Camping/Game Retrieval, Both Sides (See Tables)
- Highways, U.S. State
- Other Public Roads
- Short Route Identifier
- FS Campground
- Picnic Area
- Information Site
- FS Facility
- Peaks
- Forest or Unit Boundary
- National Forest System Lands
- Non-National Forest System Lands within the National Forest
- Wilderness Areas
- Political Boundary
- Lakes and Rivers

0 0.5 1 2 3 4 Miles

EXPLANATION OF LEGEND ITEMS

Roads Open to Highway Legal Vehicles Only:

These roads are open only to motor vehicles licensed under State law for general operation on all public roads within the state.

Roads Open to All Vehicles:

These roads are open to all motor vehicles, including smaller off-highway vehicles that may not be licensed for highway use (but not to oversize or overweight vehicles under State traffic law).

Trails Open to Vehicles 50 inches or Less in Width:

Trails open only to motor vehicles less than 50 inches in width at the widest point on the vehicle.

Seasonal Designation:

This symbol, used in conjunction with one of the other road or trail symbols, indicates that the road or trail is open only during certain portions of the year. Refer to Seasonal and Special Designation Table for further instructions.

Dispersed Camping/Game Retrieval:

Dispersed Camping/Game Retrieval, Both Sides

This symbol is used along with a designated road or trail to indicate limited cross-country motor vehicle use within a specific distance of that route, solely for the purpose of dispersed camping and/or game retrieval. The dots indicate where this activity is permitted. They may be on the left, right, or both sides of the route. Refer to the Dispersed Camping/Game Retrieval Table for specifics.

Other Public Roads and Trails:

- Highways, U.S. State, County
- Other Public Roads

These symbols are used to show routes the Forest Service does not have jurisdiction over and has not designated for motorized use. These symbols are part of the reference layers showing connections to towns and cities outside the forest boundary.

Short Route Identifier:

This symbol is used for roads that are too short to show a symbol type on the map. The symbol contains the number of the road or trail. Users should refer to the corresponding number in the Short Route Table for designation information.

PROHIBITIONS

It is prohibited to possess or operate a motor vehicle on National Forest System lands on the Gila National Forest other than in accordance with these designations (36 CFR 261.13).

Violators of 36 CFR 261.13 are subject to a fine of up to \$5,000, imprisonment for up to 6 months, or both (18 U.S.C. 3671(a)). This prohibition applies regardless of the presence or absence of signs.

This map does not display nonmotorized uses, over-snow vehicle uses, or other facilities and attractions on the Gila National Forest. Obtain forest visitor information from the local national forest office.

Designated roads, trails and areas may also be subject to temporary, emergency closures. As a visitor, you must comply with signs notifying you of such restrictions. A national forest may issue an order to close a road, trail or area on a temporary basis to protect the life, health, or safety of forest visitors or the natural or cultural resources in these areas. Such a temporary and/or emergency closure is consistent with the Travel Management Rule (36 CFR 212.52 (b), 36 CFR 261 subpart B).

The designation "road or trail open to all motor vehicles" does not supersede State traffic law.

OPERATOR RESPONSIBILITIES

Operating a motor vehicle on National Forest System roads, National Forest System trails, and in areas on National Forest System lands carries a greater responsibility than operating that vehicle in a city or other developed setting. Not only must you know and follow all applicable traffic laws, you need to show concern for the environment as well as other forest users. The misuse of motor vehicles can lead to the temporary or permanent closure of any designated road, trail, or area. As a motor vehicle operator, you are also subject to State traffic law, including State requirements for licensing, registration, and operation of the vehicle in question.

Motor vehicle use, especially off-highway vehicle use, involves inherent risks that may cause property damage, serious injury, and possibly death to participants. Drive cautiously and anticipate rough surfaces and features, such as snow, mud, vegetation, and water crossings common to remote driving conditions. By your participation, you voluntarily assume full responsibility for these damages, risks, and dangers. Take care at all times to protect yourself and those under your responsibility.

Much of the Gila National Forest is remote. Medical assistance may not be readily available. Cellular telephones do not work in many areas of the Gila National Forest. Take adequate food, water, first-aid supplies, and other equipment appropriate for the conditions and expected weather.

ALWAYS REMEMBER TO RESPECT PRIVATE LAND! PROTECT YOUR PRIVILEGE. STAY ON DESIGNATED ROADS AND TRAILS AND IN DESIGNATED AREAS.

Read and understand this map in its entirety. If you have questions, please contact the Gila National Forest for clarification.

As a motor vehicle operator on a National Forest System road, trail, or area you must comply with this map, as well as all Federal, State, and local laws and regulations. Compliance with these rules is your responsibility.

Travel and recreate with minimum impact.

Respect the environment and the rights of others.

Educate yourself, plan and prepare before you go.

Allow for future use of the outdoors by leaving it better than you found it.

Discover the rewards of responsible recreation.

For more information on Tread Lightly!, go to www.treadlightly.org or call 1-800-966-3900.

In accordance with Federal civil rights law and U.S. Department of Agriculture (USDA) civil rights regulations and policies, the USDA, its Agencies, offices, and employees, and institutions participating in or administering USDA programs are prohibited from discriminating based on race, color, national origin, religion, sex, gender identity (including gender expression), sexual orientation, disability, age, marital status, family/parental status, income derived from a public assistance program, political beliefs, or reprisal or retaliation for prior civil rights activity, in any program or activity conducted by USDA (not all bases apply to all programs). Remedies and complaint filing deadlines vary by program or incident. Persons with disabilities who require alternative means of communication for program information (e.g., Braille, large print, audiotape, American Sign Language, etc.) should contact the responsible Agency or USDA's TARGET Center at (202) 725-2660 (voice and TTY) or contact USDA through the Federal Relay Service at (800) 877-8339. Additionally, program information may be made available in languages other than English. To file a program discrimination complaint, complete the USDA Program Discrimination Complaint Form, AD-3027, found online at http://www.ascr.usda.gov/complaint_filing_cust.html and at any USDA office or write a letter addressed to USDA and provide in the letter all of the information requested in the form. To request a copy of the complaint form, call (866) 832-8992. Submit your completed form or letter to USDA by: (1) mail: U.S. Department of Agriculture, Office of the Assistant Secretary for Civil Rights, 1400 Independence Avenue, SW, Washington, D.C. 20250-9410; (2) fax: (202) 696-7442; or (3) email: program.intake@usda.gov. The USDA is an equal opportunity provider, employer, and lender.

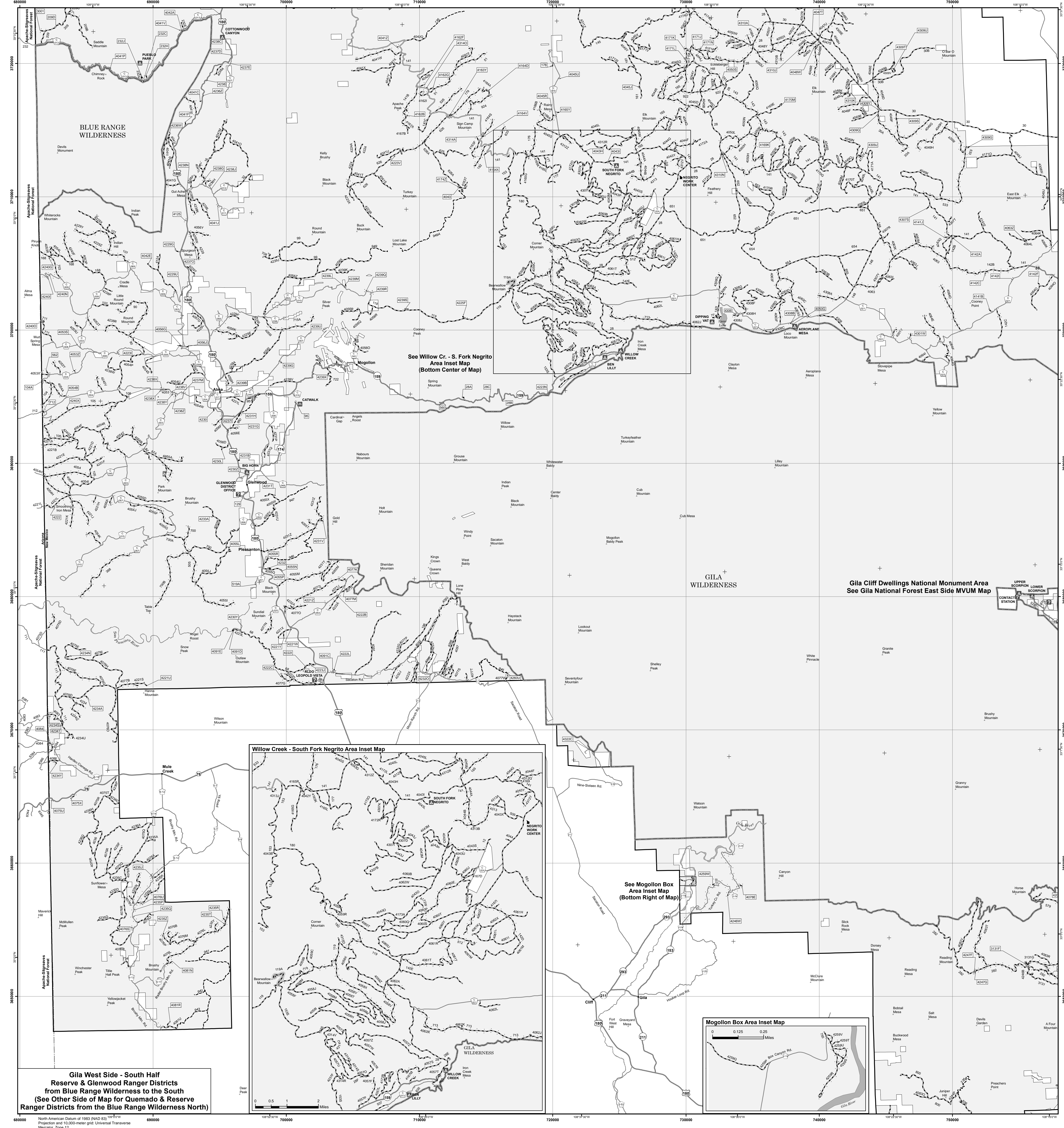
Other options for viewing or using this map include:

- View or download a copy of this map using your computer.
- Download a copy of this map to your Android or iOS smartphone or tablet, and use it as a live, navigational aid when traveling on MVUM-designated routes.
- Download a representation of this map to your Garmin GPS receiver, and use it as a live, navigational aid when traveling on MVUM-designated routes.

For more information on electronic travel aids, please visit the following website: <http://go.usa.gov/Pea>

For website to electronic maps, please scan the QR Code below with your smartphone or tablet or visit the following website: <http://tinyurl.com/wkwoqg>

Although the map content we provide is free, your wireless carrier may assess data service charges.



There are no Areas Open to Cross Country Travel or Trails too Short to be Seen Clearly on the Gila West Side - South Half Map extent.

Seasonal Vehicle Designations

Route Number	Vehicle Type	Special Vehicle Designation	Seasonal Designation	Beginning Date	Ending Date	Beginning Mile Post	Ending Mile Post
104	104A	104B	104C	104D	104E	0.00	0.30

Dispersed Camping and Game Retrieval

Entire Length of Road as Displayed on Map

300 feet either side of the road on National Forest Service Lands Only

Vehicle Type = All motorized vehicles and Date Allowed = Year Round

Road Numbers

104, 104A, 104B, 104C, 104D, 104E, 104F, 104G, 104H, 104I, 104J, 104K, 104L, 104M, 104N, 104O, 104P, 104Q, 104R, 104S, 104T, 104U, 104V, 104W, 104X, 104Y, 104Z, 105, 105A, 105B, 105C, 105D, 105E, 105F, 105G, 105H, 105I, 105J, 105K, 105L, 105M, 105N, 105O, 105P, 105Q, 105R, 105S, 105T, 105U, 105V, 105W, 105X, 105Y, 105Z, 106, 106A, 106B, 106C, 106D, 106E, 106F, 106G, 106H, 106I, 106J, 106K, 106L, 106M, 106N, 106O, 106P, 106Q, 106R, 106S, 106T, 106U, 106V, 106W, 106X, 106Y, 106Z, 107, 107A, 107B, 107C, 107D, 107E, 107F, 107G, 107H, 107I, 107J, 107K, 107L, 107M, 107N, 107O, 107P, 107Q, 107R, 107S, 107T, 107U, 107V, 107W, 107X, 107Y, 107Z, 108, 108A, 108B, 108C, 108D, 108E, 108F, 108G, 108H, 108I, 108J, 108K, 108L, 108M, 108N, 108O, 108P, 108Q, 108R, 108S, 108T, 108U, 108V, 108W, 108X, 108Y, 108Z, 109, 109A, 109B, 109C, 109D, 109E, 109F, 109G, 109H, 109I, 109J, 109K, 109L, 109M, 109N, 109O, 109P, 109Q, 109R, 109S, 109T, 109U, 109V, 109W, 109X, 109Y, 109Z, 110, 110A, 110B, 110C, 110D, 110E, 110F, 110G, 110H, 110I, 110J, 110K, 110L, 110M, 110N, 110O, 110P, 110Q, 110R, 110S, 110T, 110U, 110V, 110W, 110X, 110Y, 110Z, 111, 111A, 111B, 111C, 111D, 111E, 111F, 111G, 111H, 111I, 111J, 111K, 111L, 111M, 111N, 111O, 111P, 111Q, 111R, 111S, 111T, 111U, 111V, 111W, 111X, 111Y, 111Z, 112, 112A, 112B, 112C, 112D, 112E, 112F, 112G, 112H, 112I, 112J, 112K, 112L, 112M, 112N, 112O, 112P, 112Q, 112R, 112S, 112T, 112U, 112V, 112W, 112X, 112Y, 112Z, 113, 113A, 113B, 113C, 113D, 113E, 113F, 113G, 113H, 113I, 113J, 113K, 113L, 113M, 113N, 113O, 113P, 113Q, 113R, 113S, 113T, 113U, 113V, 113W, 113X, 113Y, 113Z, 114, 114A, 114B, 114C, 114D, 114E, 114F, 114G, 114H, 114I, 114J, 114K, 114L, 114M, 114N, 114O, 114P, 114Q, 114R, 114S, 114T, 114U, 114V, 114W, 114X, 114Y, 114Z, 115, 115A, 115B, 115C, 115D, 115E, 115F, 115G, 115H, 115I, 115J, 115K, 115L, 115M, 115N, 115O, 115P, 115Q, 115R, 115S, 115T, 115U, 115V, 115W, 115X, 115Y, 115Z, 116, 116A, 116B, 116C, 116D, 116E, 116F, 116G, 116H, 116I, 116J, 116K, 116L, 116M, 116N, 116O, 116P, 116Q, 116R, 116S, 116T, 116U, 116V, 116W, 116X, 116Y, 116Z, 117, 117A, 117B, 117C, 117D, 117E, 117F, 117G, 117H, 117I, 117J, 117K, 117L, 117M, 117N, 117O, 117P, 117Q, 117R, 117S, 117T, 117U, 117V, 117W, 117X, 117Y, 117Z, 118, 118A, 118B, 118C, 118D, 118E, 118F, 118G, 118H, 118I, 118J, 118K, 118L, 118M, 118N, 118O, 118P, 118Q, 118R, 118S, 118T, 118U, 118V, 118W, 118X, 118Y, 118Z, 119, 119A, 119B, 119C, 119D, 119E, 119F, 119G, 119H, 119I, 119J, 119K, 119L, 119M, 119N, 119O, 119P, 119Q, 119R, 119S, 119T, 119U, 119V, 119W, 119X, 119Y, 119Z, 120, 120A, 120B, 120C, 120D, 120E, 120F, 120G, 120H, 120I, 120J, 120K, 120L, 120M, 120N, 120O, 120P, 120Q, 120R, 120S, 120T, 120U, 120V, 120W, 120X, 120Y, 120Z, 121, 121A, 121B, 121C, 121D, 121E, 121F, 121G, 121H, 121I, 121J, 121K, 121L, 121M, 121N, 121O, 121P, 121Q, 121R, 121S, 121T, 121U, 121V, 121W, 121X, 121Y, 121Z, 122, 122A, 122B, 122C, 122D, 122E, 122F, 122G, 122H, 122I, 122J, 122K, 122L, 122M, 122N, 122O, 122P, 122Q, 122R, 122S, 122T, 122U, 122V, 122W, 122X, 122Y, 122Z, 123, 123A, 123B, 123C, 123D, 123E, 123F, 123G, 123H, 123I, 123J, 123K, 123L, 123M, 123N, 123O, 123P, 123Q, 123R, 123S, 123T, 123U, 123V, 123W, 123X, 123Y, 123Z, 124, 124A, 124B, 124C, 124D, 124E, 124F, 124G, 124H, 124I, 124J, 124K, 124L, 124M, 124N, 124O, 124P, 124Q, 124R, 124S, 124T, 124U, 124V, 124W, 124X, 124Y, 124Z, 125, 125A, 125B, 125C, 125D, 125E, 125F, 125G, 125H, 125I, 125J, 125K, 125L, 125M, 125N, 125O, 125P, 125Q, 125R, 125S, 125T, 125U, 125V, 125W, 125X, 125Y, 125Z, 126, 126A, 126B, 126C, 126D, 126E, 126F, 126G, 126H, 126I, 126J, 126K, 126L, 126M, 126N, 126O, 126P, 126Q, 126R, 126S, 126T, 126U, 126V, 126W, 126X, 126Y, 126Z, 127, 127A, 127B, 127C, 127D, 127E, 127F, 127G, 127H, 127I, 127J, 127K, 127L, 127M, 127N, 127O, 127P, 127Q, 127R, 127S, 127T, 127U, 127V, 127W, 127X, 127Y, 127Z, 128, 128A, 128B, 128C, 128D, 128E, 128F, 128G, 128H, 128I, 128J, 128K, 128L, 128M, 128N, 128O, 128P, 128Q, 128R, 128S, 128T, 128U, 128V, 128W, 128X, 128Y, 128Z, 129, 129A, 129B, 129C, 129D, 129E, 129F, 129G, 129H, 129I, 129J, 129K, 129L, 129M, 129N, 129O, 129P, 129Q, 129R, 129S, 129T, 129U, 129V, 129W, 129X, 129Y, 129Z, 130, 130A, 130B, 130C, 130D, 130E, 130F, 130G, 130H, 130I, 130J, 130K, 130L, 130M, 130N, 130O, 130P, 130Q, 130R, 130S, 130T, 130U, 130V, 130W, 130X, 130Y, 130Z, 131, 131A, 131B, 131C, 131D, 131E, 131F, 131G, 131H, 131I, 131J, 131K, 131L, 131M, 131N, 131O, 131P, 131Q, 131R, 131S, 131T, 131U, 131V, 131W, 131X, 131Y, 131Z, 132, 132A, 132B, 132C, 132D, 132E, 132F, 132G, 132H, 132I, 132J, 132K, 132L, 132M, 132N, 132O, 132P, 132Q, 132R, 132S, 132T, 132U, 132V, 132W, 132X, 132Y, 132Z, 133, 133A, 133B, 133C, 133D, 133E, 133F, 133G, 133H, 133I, 133J, 133K, 133L, 133M, 133N, 133O, 133P, 133Q, 133R, 133S, 133T, 133U, 133V, 133W, 133X, 133Y, 133Z, 134, 134A, 134B, 134C, 134D, 134E, 134F, 134G, 134H, 134I, 134J, 134K, 134L, 134M, 134N, 134O, 134P, 134Q, 134R, 134S, 134T, 134U, 134V, 134W, 134X, 134Y, 134Z, 135, 135A, 135B, 135C, 135D, 135E, 135F, 135G, 135H, 135I, 135J, 135K, 135L, 135M, 135N, 135O, 135P, 135Q, 135R, 135S, 135T, 135U, 135V, 135W, 135X, 135Y, 135Z, 136, 136A, 136B, 136C, 136D, 136E, 136F, 136G, 136H, 136I, 136J, 136K, 136L, 136M, 136N, 136O, 136P, 136Q, 136R, 136S, 136T, 136U, 136V, 136W, 136X, 136Y, 136Z, 137, 137A, 137B, 137C, 137D, 137E, 137F, 137G, 137H, 137I, 137J, 137K, 137L, 137M, 137N, 137O, 137P, 137Q, 137R, 137S, 137T, 137U, 137V, 137W, 137X, 137Y, 137Z, 138, 138A, 138B, 138C, 138D, 138E, 138F, 138G, 138H, 138I, 138J, 138K, 138L, 138M, 138N, 138O, 138P, 138Q, 138R, 138S, 138T, 138U, 138V, 138W, 138X, 138Y, 138Z, 139, 139A, 139B, 139C, 139D, 139E, 139F, 139G, 139H, 139I, 139J, 139K, 139L, 139M, 139N, 139O, 139P, 139Q, 139R, 139S, 139T, 139U, 139V, 139W, 139X, 139Y, 139Z, 140, 140A, 140B, 140C, 140D, 140E, 140F, 140G, 140H, 140I, 140J, 140K, 140L, 140M, 140N, 140O, 140P, 140Q, 140R, 140S, 140T, 140U, 140V, 140W, 140X, 140Y, 140Z, 141, 141A, 141B, 141C, 141D, 141E, 141F, 141G, 141H, 141I, 141J, 141K, 141L, 141M, 141N, 141O, 141P, 141Q, 141R, 141S, 141T, 141U, 141V, 141W, 141X, 141Y, 141Z, 142, 142A, 142B, 142C, 142D, 142E, 142F, 142G, 142H, 142I, 142J, 142K, 142L, 142M, 142N, 142O, 142P, 142Q, 142R, 142S, 142T, 142U, 142V, 142W, 142X, 142Y, 142Z, 143, 143A, 143B, 143C, 143D, 143E, 143F, 143G, 143H, 143I, 143J, 143K, 143L, 143M, 143N, 143O, 143P, 143Q, 143R, 143S, 143T, 143U, 143V, 143W, 143X, 143Y, 143Z, 144, 144A, 144B, 144C, 144D, 144E, 144F, 144G, 144H, 144I, 144J, 144K, 144L, 144M, 144N, 144O, 144P, 144Q, 144R, 144S, 144T, 144U, 144V, 144W, 144X, 144Y, 144Z, 145, 145A, 145B, 145C, 145D, 145E, 145F, 145G, 145H, 145I, 145J, 145K, 145L, 145M, 145N, 145O, 145P, 145Q, 145R, 145S, 145T, 145U, 145V, 145W, 145X, 145Y, 145Z, 146, 146A, 146B, 146C, 146D, 146E, 146F, 146G, 146H, 146I, 146J, 146K, 146L, 146M, 146N, 146O, 146P, 146Q, 146R, 146S, 146T, 146U, 146V, 146W, 146X, 146Y, 146Z, 147, 147A, 147B, 147C, 147D, 147E, 147F, 147G, 147H, 147I, 147J, 147K, 147L, 147M, 147N, 147O, 147P, 147Q, 147R, 147S, 147T, 147U, 147V, 147W, 147X, 147Y, 147Z, 148, 148A, 148B, 148C, 148D, 148E, 148F, 148G, 148H, 148I, 148J, 148K, 148L, 148M, 148N, 148O, 148P, 148Q, 148R, 148S, 148T, 148U, 148V, 148W, 148X, 148Y, 148Z, 149, 149A, 149B, 149C, 149D, 149E, 149F, 149G, 149H, 149I, 149J, 149K, 149L, 149M, 149N, 149O, 149P, 149Q, 149R, 149S, 149T, 149U, 149V, 149W, 149X, 149Y, 149Z, 150, 150A, 150B, 150C, 150D, 150E, 150F, 150G, 150H, 150I, 150J, 150K, 150L, 150M, 150N, 150O, 150P, 150Q, 150R, 150S, 150T, 150U, 150V, 150W, 150X, 150Y, 150Z, 151, 151A, 151B, 151C, 151D, 151E, 151F, 151G, 151H, 151I, 151J, 151K, 151L, 151M, 151N, 151O, 151P, 151Q, 151R, 151S, 151T, 151U, 151V, 151W, 151X, 151Y, 151Z, 152, 152A, 152B, 152C, 152D, 152E, 152F, 152G, 152H, 152I, 152J, 152K, 152L, 152M, 152N, 152O, 152P, 152Q, 152R, 152S, 152T, 152U, 152V, 152W, 152X, 152Y, 152Z, 153, 153A, 153B, 153C, 153D, 153E, 153F, 153G, 153H, 153I, 153J, 153K, 153L, 153M, 153N, 153O, 153P, 153Q, 153R, 153S, 153T, 153U, 153V, 153W, 153X, 153Y, 153Z, 154, 154A, 154B, 154C, 154D, 154E, 154F, 154G, 154H, 154I, 154J, 154K, 154L, 154M, 154N, 154O, 154P, 154Q, 154R, 154S, 154T, 154U, 154V, 154W, 154X, 154Y, 154Z, 155, 155A, 155B, 155C, 155D, 155E, 155F, 155G, 155H, 155I, 155J, 155K, 155L, 155M, 155N, 155O, 155P, 155Q, 155R, 155S, 155T, 155U, 155V, 155W, 155X, 155Y, 155Z, 156, 156A, 156B, 156C, 156D, 156E, 156F, 156G, 156H, 156I, 156J, 156K, 156L, 156M, 156N, 156O, 156P, 156Q, 156R, 156S, 156T, 156U, 156V, 156W, 156X, 156Y, 156Z, 157, 157A, 157B, 157C, 157D, 157E, 157F, 157G, 157H, 157I, 157J, 157K, 157L, 157M, 157N, 157O, 157P, 157Q, 157R, 157S, 157T, 157U, 157V, 157W, 157X, 157Y, 157Z, 158, 158A, 158B, 158C, 158D, 158E, 158F, 158G, 158H, 158I, 158J, 158K, 158L, 158M, 158N, 158O, 158P, 158Q, 158R, 158S, 158T, 158U, 158V, 158W, 158X, 158Y, 158Z, 159, 159A, 159B, 159C,